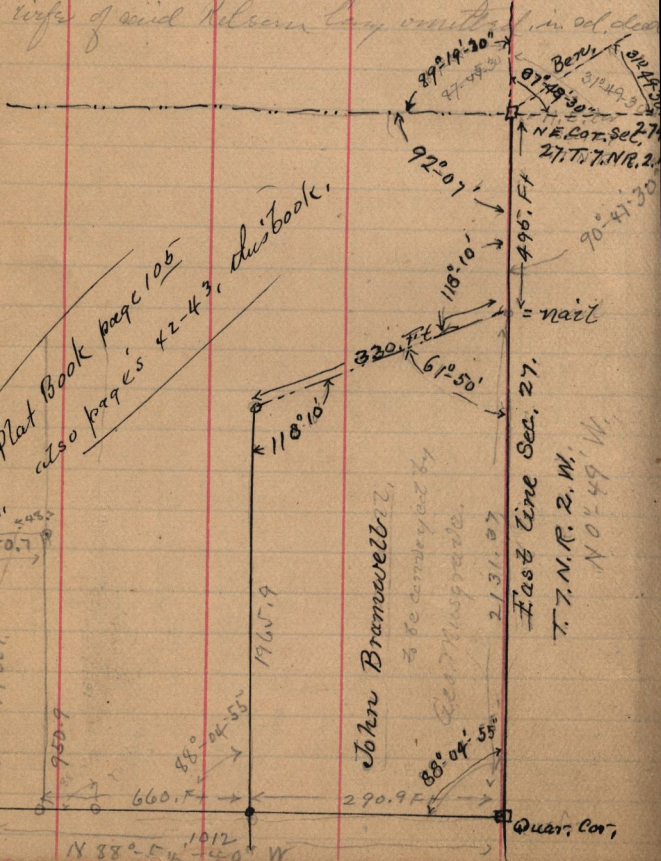
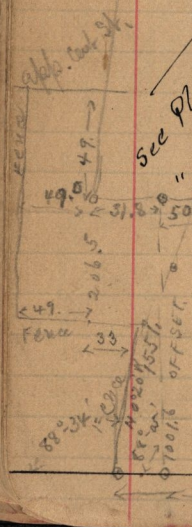


Copy of deed from Ralph B. Robson, Esq.
 Thos. A. Clement Jr.
 Apr 23-1892, L. #2350, P.M. E 1/4 Sec. 27, T. 7, N.
 R. 2, W. Bq. N.E. Cor. sec 1/4 Sec, S. 30.0 to
 road; S.W. 1/4 on road, 20.0, S 117.0,
 N 40.0, N 74.0, to road, N 5.0, N. 66.0,
 E. 65.0, to log. 47.0, given to correct
 deed given Jan'y 25-1891, & recorded
 May 14-1891, as to signature of Evalina
 wife of said Robson, say omitted, in sd. deed



See Plat Book page 105
 also pages 42-43, this book.



add. cont. st.